



PART NUMBER

PF32K-1003

DESCRIPTION

LAND ROVER DEFENDER 2002 ONWARDS HANDLING PACK

Thank You Letter

Many thanks for purchasing this Powerflex Handling Package.

This selection of parts has been put together to give you the perfect combination of value versus performance and based on years of experience, we have selected what we feel are the products that are going to give you the best handling improvements for your vehicle whilst being mindful of cost.

Your Powerflex Handling Package can be fitted to refresh the suspension feel of your vehicle or can be a great accompaniment to other suspension upgrades when preparing a vehicle for track driving.

Below is a listing of the parts included in this kit,

PFF32-301 Panhard Rod Bush

PFF32-108 Front Radius Arm Front Bush 44mm

PFF32-109 Front Radius Arm Rear Bush

PFR32-110 A Frame to Chassis Bush

PFR32-111 Rear Radius Arm Front Bush

PFR32-112 Rear Trailing Arm to Axle Bush

We hope you enjoy the difference Powerflex suspension bushes make to your vehicle.





PART NUMBER

PFF32-109

DESCRIPTION

FRONT RADIUS ARM REAR BUSH

INSTALLATION GUIDE

Product Description:

This part replaces OE numbers NRC4514 and ANR6971.

Contents (parts per pack):

4 x Polyurethane bushes 2 x M20 nylock nuts

2 x M20 steel washers

1 x PTFE / Silicone Assembly Grease

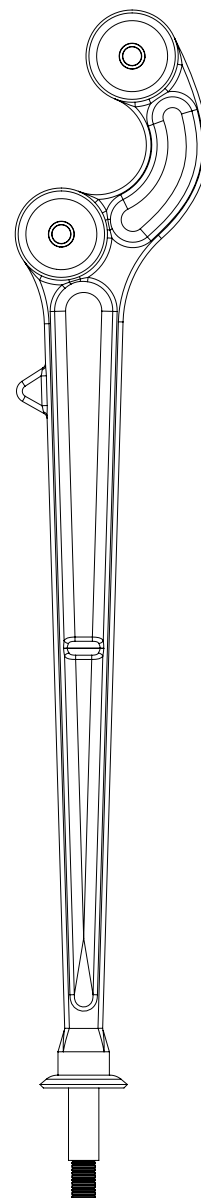
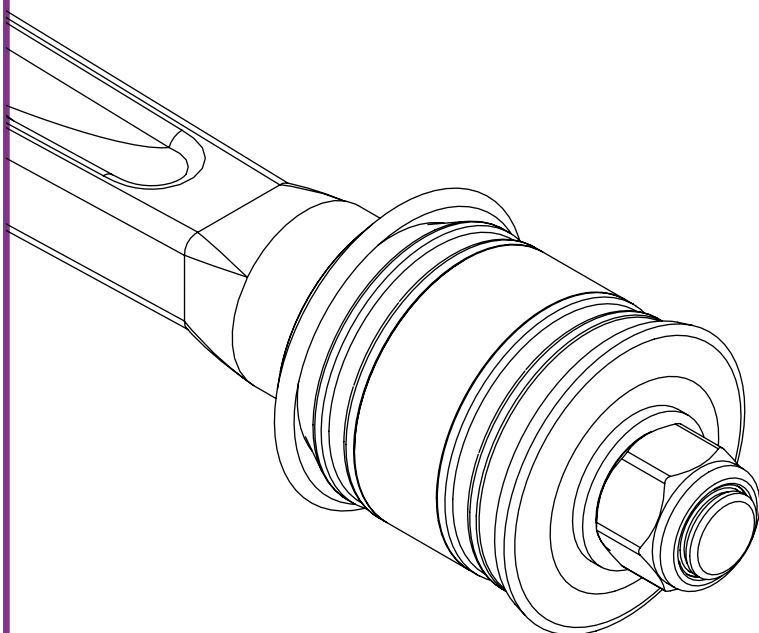
*Please read the complete fitting instructions and check package components before fitment.
These fitting instructions are to be used as a guide and in conjunction with workshop manual.*

It is recommended that:

- all work to be carried out by a licensed technician;*
 - all safety precautions adhered to;*
 - wheel alignment to be checked and adjusted as required after any suspension work.*
- All fasteners must be tensioned to manufacturer's torque settings.*

Fitting Instructions:

1. Remove the original bush from the car, clean any dirt and corrosion from the bore in the chassis. Remove all sharp edges using a file.
2. Fit the polyurethane bushes into the bore into each side of the chassis bore.
3. Apply some of the supplied PTFE/ Silicone grease to the bore and mounting faces of each bush and insert pin end of the arm into the bush.
4. Fit the original washer onto the end of the bush assembly, followed by the supplied M20 washer and M20 nylock nut.
5. Re-tighten all hardware to manufacturers recommended torque settings.



Polyurethane Bush



Chassis



Polyurethane Bush



Original Washer



M20 Washer



M20 Nylock Nut



**PART NUMBER****PFR32-111****DESCRIPTION****REAR RADIUS ARM FRONT BUSH****INSTALLATION GUIDE****Contents (parts per pack):**

- 2 x Polyurethane A bushes
- 2 x Polyurethane B bushes 2 x Stainless steel sleeves
- 2 x Steel mounting brackets 2 x **POWERFLEX** washers
- 2 x M20 steel washers
- 2 x M20 Nylock nuts
- 1 x PTFE / Silicone Assembly Grease

Please read the complete fitting instructions and check package components before fitment. These fitting instructions are to be used as a guide and in conjunction with workshop manual.

It is recommended that:

- all work to be carried out by a licensed technician;*
 - all safety precautions adhered to;*
 - wheel alignment to be checked and adjusted as required after any suspension work.*
- All fasteners must be tensioned to manufacturer's torque settings.*

Fitting Instructions:

1. Remove the original bush from the car.
2. Fit the steel mounting bracket to each side of the car with the notch in the bore of the bracket facing upwards.
3. Fit the B part polyurethane bush into the mounting bracket from the rear of the car. Fit the A part polyurethane bush onto the front side of the mounting bracket, apply some of the supplied PTFE / Silicone grease to the bore and mounting faces of each bush and insert the stainless steel sleeve into the bush.
4. Fit the **POWERFLEX** washer onto the pin end of the arm with the text and chamfered edge facing towards the rear of the car, towards the arm.
5. Fit the arm into the bush and fit the remaining washers onto the front of the bush and tighten all hardware to manufacturers recommended torque settings.

